

COFFEE TABLE



THE MARBLE COLLECTION



LC-106
COFFEE TABLE 岩板面茶几
 TOP: PORCELAIN MARBLE
 BASE: STAINLESS STEEL WITH GOLD BRUSHED FINISHING
 LC-106 W 900 D 900 H 300 mm



LC-057
COFFEE TABLE 瓷砖面茶几
 TOP: PORCELAIN MARBLE
 BASE: STAINLESS STEEL WITH GOLD BRUSHED FINISHING
 LC-057 DIA 800 H 440 mm



LC-039
COFFEE TABLE 岩板面茶几
 TOP: PORCELAIN MARBLE
 BASE: STAINLESS STEEL WITH GOLD BRUSHED FINISHING
 LC-039 DIA 900 H 300 mm



LC-041
COFFEE TABLE 岩板面茶几
 TOP: PORCELAIN MARBLE
 BASE: STAINLESS STEEL WITH GOLD BRUSHED FINISHING
 LC-041 W 900 D 900 H 300 mm



LC-045
COFFEE TABLE 金属台面茶几
 TOP: STAINLESS STEEL WITH GOLD BRUSHED FINISHING
 BASE: REAL MARBLE
 LC-045-1 DIA 800 H 310 mm
 LC-045-2 DIA 600 H 450 mm



LC-058
COFFEE TABLE 瓷砖面茶几
 TOP: PORCELAIN MARBLE
 BASE: STAINLESS STEEL WITH GOLD BRUSHED FINISHING
 LC-058-1 DIA 800 H 450 mm
 LC-058-2 DIA 600 H 500 mm



LC-038
COFFEE TABLE 瓷砖面茶几
 TOP: PORCELAIN MARBLE
 BASE: STAINLESS STEEL WITH GOLD BRUSHED FINISHING
 LC-038 DIA 800 H 360 mm



LC-076
COFFEE TABLE 瓷砖面茶几
 TOP: PORCELAIN MARBLE
 BASE: STAINLESS STEEL WITH GOLD BRUSHED FINISHING
 LC-076-1 W 800 D 800 H 380 mm
 LC-076-2 W 500 D 500 H 460 mm



LC-105
COFFEE TABLE 岩板面茶几
 TOP: PORCELAIN MARBLE
 BASE: STAINLESS STEEL WITH GOLD BRUSHED FINISHING
 LC-105-1 DIA 900 H 325 mm
 LC-105-2 DIA 550 H 470 mm



LC-080
COFFEE TABLE 大理石面茶几
 TOP: ARTIFICIAL MARBLE
 BASE: MILD STEEL WITH BLACK POWDER COATED FINISHING
 LC-080-1 DIA 900 H 360 mm
 LC-080-2 DIA 550 H 460 mm



LC-048
COFFEE TABLE 瓷砖面茶几
 TOP: PORCELAIN MARBLE
 BASE: MILD STEEL WITH BLACK POWDER COATED FINISHING
 LC-048-1 DIA 800 H 410 mm
 LC-048-2 DIA 600 H 460 mm
 LC-048 W 1400 D 700 H 400 mm



LC-053
COFFEE TABLE 水磨石面茶几
 TOP: TERRAZO
 BASE: MILD STEEL WITH BLACK POWDER COATED FINISHING
 LC-053-1 DIA 800 H 360 mm
 LC-053-2 DIA 600 H 480 mm



LC-028
COFFEE TABLE 瓷砖面茶几
 TOP: PORCELAIN MARBLE
 BASE: MILD STEEL WITH BLACK POWDER COATED FINISHING
 LC-028 DIA 800 H 420 mm



LC-063
COFFEE TABLE 瓷砖面茶几
 TOP: PORCELAIN MARBLE
 BASE: MILD STEEL WITH BLACK POWDER COATED FINISHING
 LC-063-1 DIA 800 H 350 mm
 LC-063-2 DIA 600 H 500 mm



LC-043
COFFEE TABLE 瓷砖面茶几
 TOP: PORCELAIN MARBLE
 BASE: MILD STEEL WITH BLACK POWDER COATED FINISHING
 LC-043-1 DIA 800 H 390 mm
 LC-043-2 DIA 600 H 490 mm



LC-032-C
COFFEE TABLE 瓷砖面茶几
 TOP: PORCELAIN MARBLE
 BASE: MILD STEEL WITH BLACK POWDER COATED FINISHING
 LC-032-C W 900 D 900 H 200 mm



LC-059
COFFEE TABLE 瓷砖面茶几
 TOP: PORCELAIN MARBLE
 BASE: MILD STEEL WITH BLACK POWDER COATED FINISHING
 LC-059 W 800 D 800 H 460 mm



LC-042
COFFEE TABLE 瓷砖面茶几
 TOP: PORCELAIN MARBLE
 BASE: MILD STEEL WITH BLACK POWDER COATED FINISHING
 LC-042-1 DIA 800 H 380 mm
 LC-042-2 DIA 600 H 520 mm



LC-066
COFFEE TABLE 瓷砖面茶几
 TOP: PORCELAIN MARBLE
 BASE: MILD STEEL WITH BLACK POWDER COATED FINISHING
 LC-066-1 DIA 800 H 450 mm
 LC-066-2 DIA 600 H 520 mm



LC-107
COFFEE TABLE 玻璃面茶几
 TOP: TEMPERED GLASS BLACK
 BASE: MILD STEEL WITH WOOD POWDER COATED FINISHING
 LC-107-1 DIA 750 H 420 mm
 LC-107-2 DIA 500 H 520 mm



LC-109
COFFEE TABLE 瓷砖台面茶几
 TOP: PORCELAIN MARBLE
 BASE: MILD STEEL WITH GOLD POWDER COATED FINISHING
 LC-109 DIA 400 H 560 mm



LC-110
COFFEE TABLE 玻璃面茶几
 TOP: TEMPERED GLASS
 BASE: SOLID BRONZE
 LC-110 DIA 560 H 580 mm



LC-077
COFFEE TABLE 大理石面茶几
 TOP: REAL MARBLE
 BASE: SOLID BRONZE
 LC-077 DIA 500 H 600 mm



LC-070
COFFEE TABLE 玻璃面茶几
 TOP: TEMPERED GLASS CLEAR
 BASE: MILD STEEL WITH BLACK POWDER COATED FINISHING
 LC-070-1 DIA 900 H 340 mm
 LC-070-2 DIA 510 H 500 mm



LC-026
COFFEE TABLE 玻璃面茶几
 TOP: TEMPERED GLASS GREY
 BASE: MILD STEEL WITH BLACK POWDER COATED FINISHING
 LC-026-1 DIA 1000 H 350 mm
 LC-026-2 DIA 500 H 470 mm



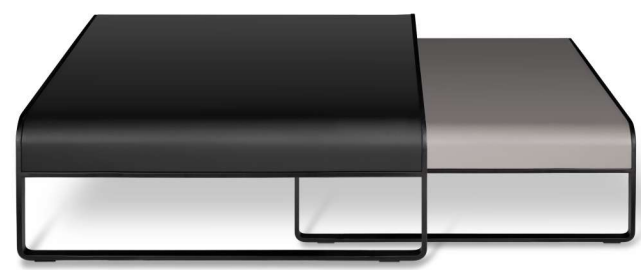
LC-022
COFFEE TABLE 大理石面茶几
 TOP: ARTIFICIAL MARBLE
 BASE: MILD STEEL WITH BLACK POWDER COATED FINISHING
 LC-022 DIA 450 H 520 mm



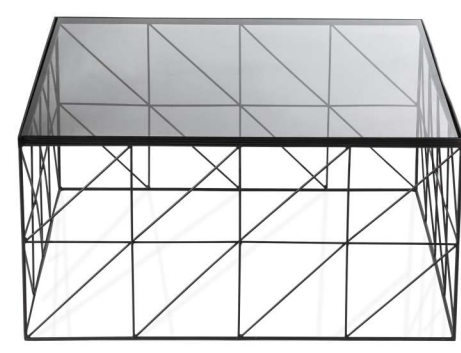
LC-078
COFFEE TABLE 金属台面茶几
 TOP: STAINLESS STEEL WITH GOLD BRUSHED FINISHING
 BASE: MILD STEEL WITH BLACK POWDER COATED FINISHING
 LC-078 DIA 450 H 540 mm



LC-111
COFFEE TABLE 大理石面茶几
 TOP: ARTIFICIAL MARBLE
 BASE: MILD STEEL WITH BLACK POWDER COATED FINISHING
 LC-111 W 500 D 350 H 600 mm



LC-062
COFFEE TABLE 皮艺面茶几
 TOP: MILD STEEL WITH PU UPHOLSTERY
 BASE: STAINLESS STEEL
 LC-062-1 W 1070 D 1070 H 320 mm
 LC-062-2 W 970 D 970 H 260 mm



LC-067
COFFEE TABLE 玻璃面茶几
 TOP: TEMPERED GLASS
 BASE: MILD STEEL WITH BLACK POWDER COATED FINISHING
 LC-067-1 W 760 D 760 H 380 mm
 LC-067-2 W 570 D 570 H 570 mm



LC-060
COFFEE TABLE 大理石面茶几
 TOP: ARTIFICIAL MARBLE
 BASE: MILD STEEL WITH BLACK POWDER COATED FINISHING
 LC-060 DIA 450 H 560 mm



LC-055
COFFEE TABLE 大理石面茶几
 TOP: ARTIFICIAL MARBLE
 BASE: MILD STEEL WITH BLACK POWDER COATED FINISHING
 LC-055 DIA 500 H 600 mm



LC-071
COFFEE TABLE 大理石面茶几
 TOP: ARTIFICIAL MARBLE
 BASE: STAINLESS STEEL WITH NICKEL BRUSHED FINISHING
 LC-071-1 DIA 600 H 760 mm
 LC-071-2 DIA 500 H 585 mm



LC-023
COFFEETABLE 瓷砖面茶几
 TOP: PORCELAIN MARBLE
 BASE: DIE CAST ALUMINIUM WITH CHROME FINISHING
 LC-023 DIA750 H 450 mm



LC-056
COFFEETABLE 木面茶几
 TOP: WOOD
 BASE: MILD STEEL WITH BLACK POWDER COATED FINISHING
 LC-056-1 DIA800 H 360 mm
 LC-056-2 DIA500 H 460 mm



LC-083-4



LC-083-8



LC-083-9



LC-108
COFFEETABLE 金属台面茶几
 TOP: STAINLESS STEEL WITH GOLD BRUSHED FINISHING
 BASE: MILD STEEL WITH BLACK POWDER COATED FINISHING
 LC-108 DIA600 H 480 mm



LC-069
COFFEETABLE 大理石面茶几
 TOP: REAL MARBLE
 BASE: MILD STEEL WITH BLACK POWDER COATED FINISHING
 LC-069 DIA550 H 450 mm



LC-102
COFFEETABLE 大理石面茶几
 TOP: REAL MARBLE
 BASE: STAINLESS STEEL WITH GOLD BRUSHED FINISHING
 LC-102 W 500 D 500 H 450 mm



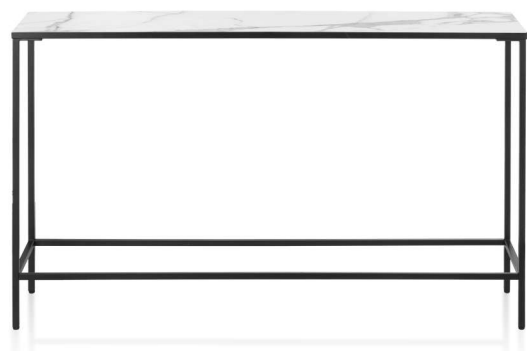
LC-083-1



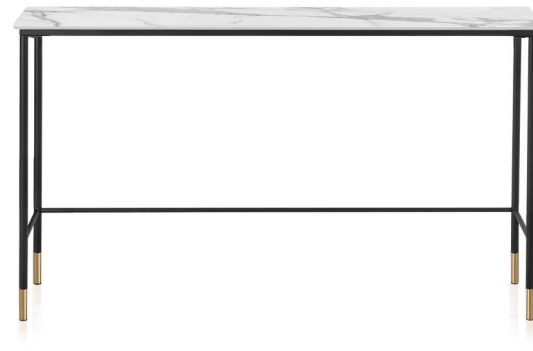
LC-083-2



LC-083-3



LC-082
CONSOLE 操作台
 TOP: PORCELAIN MARBLE
 BASE: MILD STEEL WITH BLACK POWDER COATED FINISHING
 LC-082 W1200 D260 H 740 mm



LC-081
CONSOLE 操作台
 TOP: PORCELAIN MARBLE
 BASE: MILD STEEL WITH BLACK POWDER COATED FINISHING
 LC-081 W1200 D260 H 750 mm



LC-083-5



LC-083-10



LC-083-7

COFFEETABLE
天然大理石底座茶几
 TOP: STAINLESS STEEL WITH GOLD BRUSHED FINISHING
 BASE: REAL MARBLE
 LC-083 DIA 500 H 610 mm



LC-112
COFFEE TABLE 瓷砖面茶几

TOP: PORCELAIN MARBLE
BASE: MILD STEEL WITH BLACK POWDER COATED FINISHING
LC-112-1 W 1200 D 600 H 420 mm
LC-112-2 W 810 D 560 H 360 mm
LC-112-3 W 730 D 490 H 280 mm



LC-046
COFFEE TABLE 瓷砖面茶几

TOP: PORCELAIN MARBLE
BASE: MILD STEEL WITH BLACK POWDER COATED FINISHING
LC-046-1 W 1200 D 800 H 420 mm
LC-046-2 W 900 D 600 H 360 mm



LC-068
COFFEE TABLE 大理石面茶几

TOP: REAL MARBLE
BASE: MILD STEEL WITH BLACK POWDER COATED FINISHING
LC-068-1 W 1000 D 500 H 450 mm
LC-068-2 W 650 D 300 H 520 mm



LC-040
COFFEE TABLE 瓷砖面茶几

TOP: PORCELAIN MARBLE
BASE: MILD STEEL WITH BLACK POWDER COATED FINISHING
LC-040 DIA 900 H 370 mm

THE MOULDED GLASS COLLECTION



LC-087
COFFEE TABLE 玻璃底座茶几
 TOP: STAINLESS STEEL WITH GOLD BRUSHED FINISHING
 BASE: MOULD TEMPERED GLASS
 LC-087-1 DIA 700 H 360 mm
 LC-087-2 DIA 600 H 430 mm



LC-085
COFFEE TABLE 玻璃底座茶几
 TOP: TEMPERED GLASS
 BASE: MOULDED TEMPERED GLASS
 LC-085-1 DIA 700 H 360 mm
 LC-085-2 DIA 500 H 430 mm



LC-088
COFFEE TABLE 玻璃底座茶几
 TOP: STAINLESS STEEL WITH GOLD BRUSHED FINISHING
 BASE: MOULD TEMPERED GLASS
 LC-088-1 DIA 700 H 350 mm
 LC-088-2 DIA 600 H 420 mm

THE 3D COLLECTION



LC-017
COFFEE TABLE 晶面茶几
 TOP: COMPOSITE RESIN TOP
 BASE: SOLID WOOD
 LC-017-SZ W 1200 D 900 H 410 mm



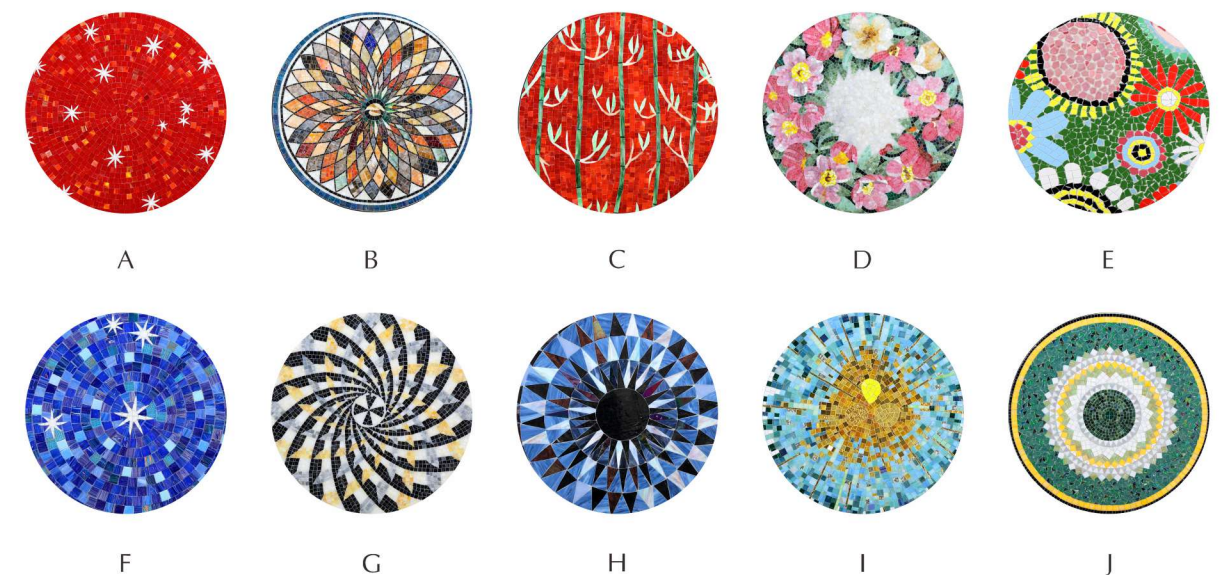
LC-092
COFFEE TABLE 3D不锈钢底座茶几
 TOP: PORCELAIN MARBLE
 BASE: 3D STAINLESS STEEL WITH GOLD BRUSHED FINISHING
 LC-092-1 DIA 795 H 345 mm
 LC-092-2 DIA 450 H 460 mm



LC-091
COFFEE TABLE 3D不锈钢底座茶几
 TOP: PORCELAIN MARBLE
 BASE: 3D STAINLESS STEEL WITH GOLD BRUSHED FINISHING
 LC-091-1 DIA 795 H 370 mm
 LC-091-2 DIA 450 H 460 mm



LC-095
COFFEE TABLE 马赛克面茶几
 TOP: MOSAIC
 BASE: STAINLESS STEEL WITH GOLD BRUSHED FINISHING
 LC-095-1 DIA 700 H 420 mm
 LC-095-2 DIA 500 H 520 mm





LC-100

COFFEETABLE 3D镜面茶几

TOP:3D MIRROR TEMPERED GLASS
BASE: MILD STEEL WITH BLACK POWDER COATED FINISHING
LC-100-1 DIA 800 H 380 mm
LC-100-2 DIA 600 H 440 mm



LC-099

COFFEETABLE 3D镜面茶几

TOP:3D MIRROR TEMPERED GLASS
BASE: MILD STEEL WITH BLACK POWDER COATED FINISHING
LC-099-1 DIA 750 H 360 mm
LC-099-2 DIA 400 H 450 mm



LC-098

COFFEETABLE 3D镜面茶几

TOP:3D MIRROR TEMPERED GLASS
BASE: STAINLESS STEEL
LC-098-1 DIA 855 H 350 mm
LC-098-2 DIA 660 H 445 mm

LINYU 林誉

公司地址

广州市番禺区东环街番禺大道北
555号天安总部中心23号楼10楼

The 10th floor,Block 23th, Tian'an Ecological
Industrial Park555 Panyu North Avenue
Panyu District,Guangzhou, P.R. China.

工厂地址

清远市清城区石角镇循环经济产业园

Qinyuan Factory
Circular Economy Industrial Park, Shijiao Town,
Qincheng District, Qinyuan City.



广州市悦方智能家居有限公司
GUANGZHOU JOYUES FURNITURE CO.,LTD

电话: +86 20 34560852
E-mail: sales@linyu.com
网址: www.linyu.com